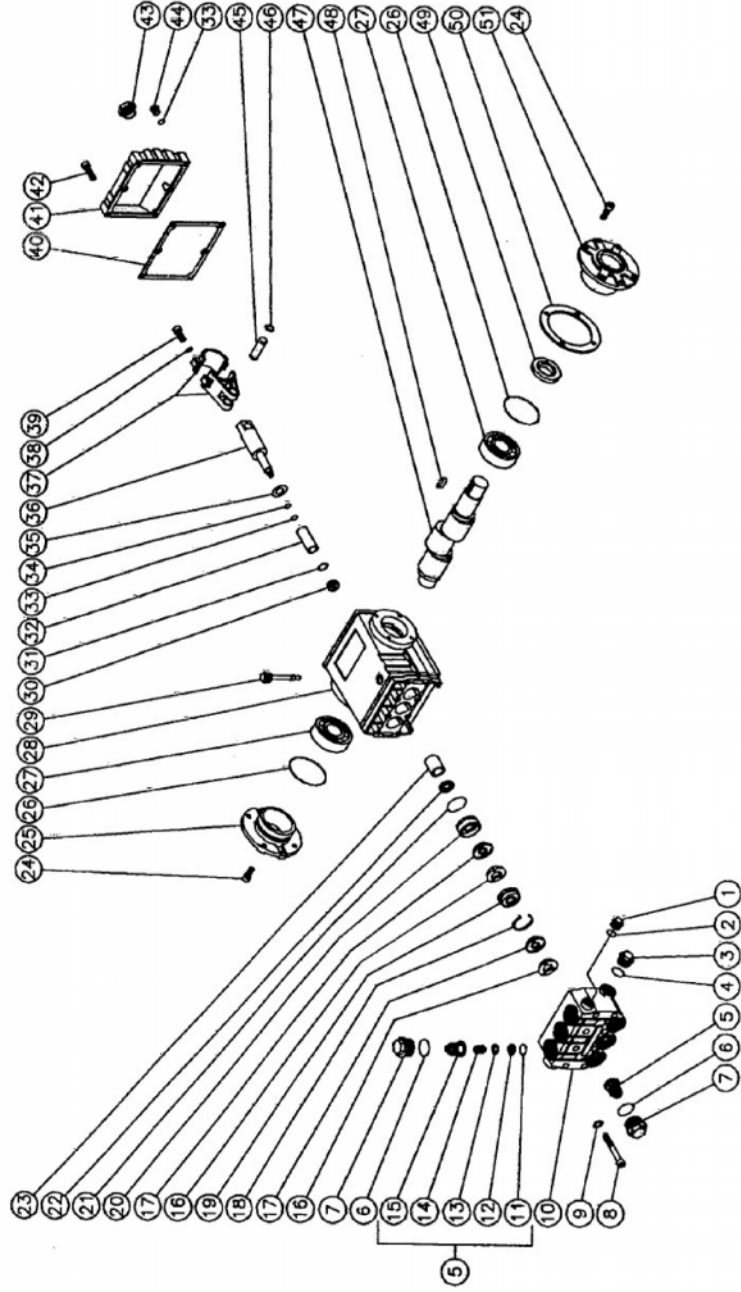


PUMP ASSEMBLY (3-0007)



PUMP ASSEMBLY (3-0007) FOR HB-1605-0M10

REF. #	DESCRIPTION	PART #	QTY.	REF. #	DESCRIPTION	PART #	QTY.
1	Hex Plug	39-0018	1	29	Oil Dip Stick	46-0144	1
2	Washer	28-0600	1	30	Nut	46-0069	3
3	Hex Plug	39-0019	1	31	Washer	28-0400	3
4	Washer	28-0601	1	32	Ceramic Plunger	46-0052	3
5	Valve Assembly (Includes 11-15) (See 70-0009)	N/A Sep.	6	33	O-ring	25-0014	4
6	O-ring	25-0012	6	34	Back-up Ring	46-0109	3
7	Valve Plug	39-0020	6	35	Flinger Washer	46-0146	3
8	Bolt	27-8185	8	36	Piston Rod	46-0055	3
9	Lockwasher	28-0210	8	37	Connecting Rod	46-0051	3
10	Pump Manifold	46-0060	1	38	Lockwasher	29-0154	6
11	O-ring (See 70-0009)	N/A Sep.	6	39	Bolt	27-8435	6
12	Valve Seat (See 70-0009)	N/A Sep.	6	40	O-ring for Cover	25-0339	1
13	Valve Plate (See 70-0009)	N/A Sep.	6	41	Crankcase Cover	46-0064	1
14	Valve Spring (See 70-0009)	N/A Sep.	6	42	Bolt	27-8401	5
15	Valve Cage (See 70-0009)	N/A Sep.	6	43	Oil Level Indicator	46-0114	1
16	Head Ring (See 70-0030)	N/A Sep.	6	44	Hex Plug	39-0017	1
17	V-Packing (See 70-0039)	N/A Sep.	6	45	Connecting Rod Pin	43-0032	3
18	Long Life Ring (See 852-0010)	N/A Sep.	3	46	Retaining Ring	46-0103	6
19	Intermediate Ring	46-0067	3	47	Crankshaft	46-0060	1
20	Adapter	46-0057	3	48	Key	43-0048	1
21	O-ring	25-0015	3	49	Oil Seal	26-0049	1
22	Oil Seal	26-0047	3	50	Shim	46-0113	2
23	Bushing	9-0029	3	51	Crankcase Cover	46-0296	1
24	Bolt	27-8431	8		Valve Kit (Includes 6 each 5, OR 11-15)	70-0009	
25	Crankcase Cover	46-0336	1		Packing Kit (6 each 17)	70-0039	
26	O-ring	25-0013	2		Head Ring Kit (6 each 16)	70-0030	
27	Roller Bearing	4R-0004	2		Packing Assy. (Includes 6 each 16 & 17, and 3 each 18 & 21)	852-0010	
28	Crankcase	46-0047	1				